

**BIRDTAIL UNIT NO. 2
WATERFLOOD EOR PROJECT**

ANNUAL REPORT FOR 2010

July 27, 2011

Tundra Oil and Gas Partnership

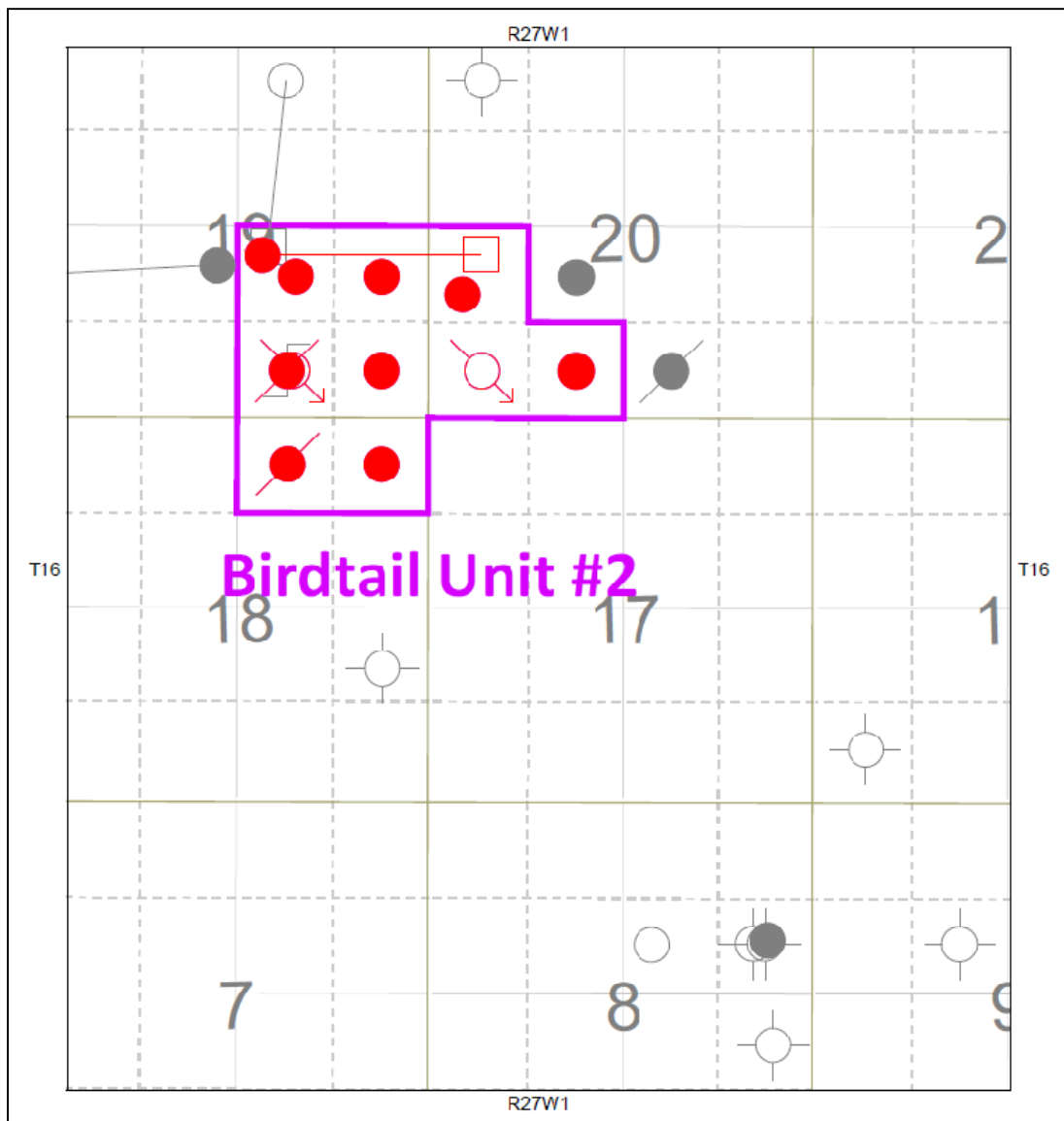
Table of Contents

INTRODUCTION	3
DISCUSSION	4
Production History	4
Waterflood History	5
Water Source and Quality	6
Injection Wellhead Pressures	6
Reservoir Pressure	6
Well Servicing	6
Voidage Replacement.....	6
Waterflood Performance Discussion.....	7
List of Appendices.....	9
Appendix A: Well Name and Well Status	
Appendix B: Monthly Injection Wellhead Pressures Table and Plots	
Appendix C: Birdtail Unit No. 2 Injection Pattern Summary	
Appendix D: Injector Pattern Production/Injection Rates, Cumulative and VRRs, Plots and Tables	

INTRODUCTION

Birdtail Unit No. 2 Enhanced Oil Recovery (EOR) Waterflood Project was approved under Waterflood Order No. 8 effective December 1, 2000 with Progress Energy Production Partnership as Operator. Tundra acquired the unit from Progress Energy Production Partnership and become operator in October 2003. The EOR project area contains 11 wells in 9 LSDs in Township 16, Range 27 W1 as shown in the figure below. Well list and well status is available in Appendix A.

Figure 1: Birdtail Unit No. 2 Area Outline



In accordance with Section 73 of the Manitoba Drilling and Production Regulation, Tundra hereby submits the 2010 Annual Progress Report for Birdtail Unit No. 2 as required by Board Order No. 8.

DISCUSSION

Production History

For the wells included in Birdtail Unit No. 2, production started January 1997 with 00/05-20-016-27W1/0 well. Oil production peaked at 11.8 m³/d in July 1998. The water oil ratio (WOR) averaged 1.82 m³/m³ over the last half of 2010. The Unit was producing 7.65 m³/d of oil and 15.3 m³/d of water, in December 2010. The oil production rate, injection rate, and WOR during each month for each injection pattern and for whole project are presented in Appendix D. The rates and WOR are presented in Figure 2.

Figure 2: Birdtail Unit No. 2 Production/Injection Rates and WOR vs. Time

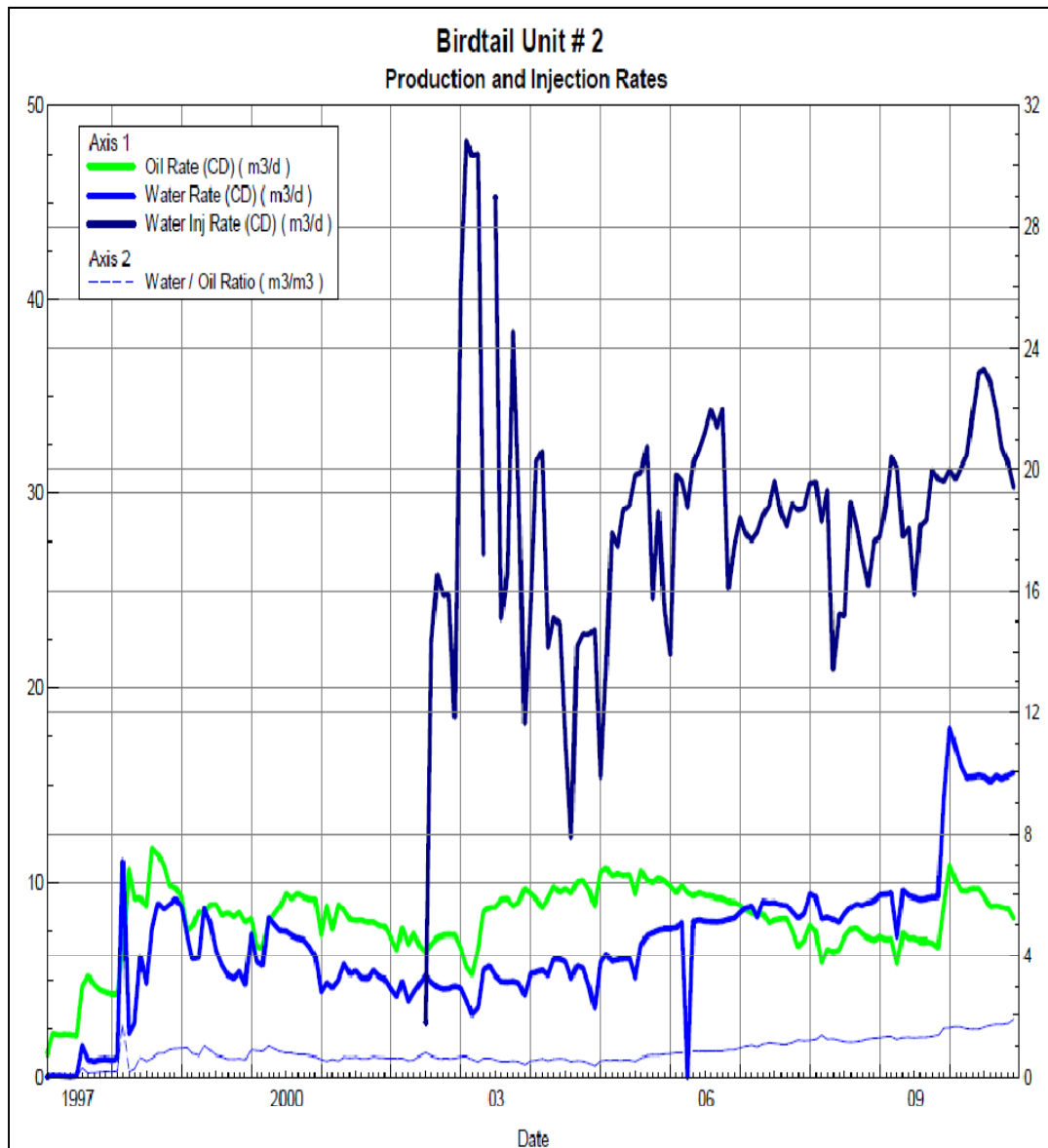
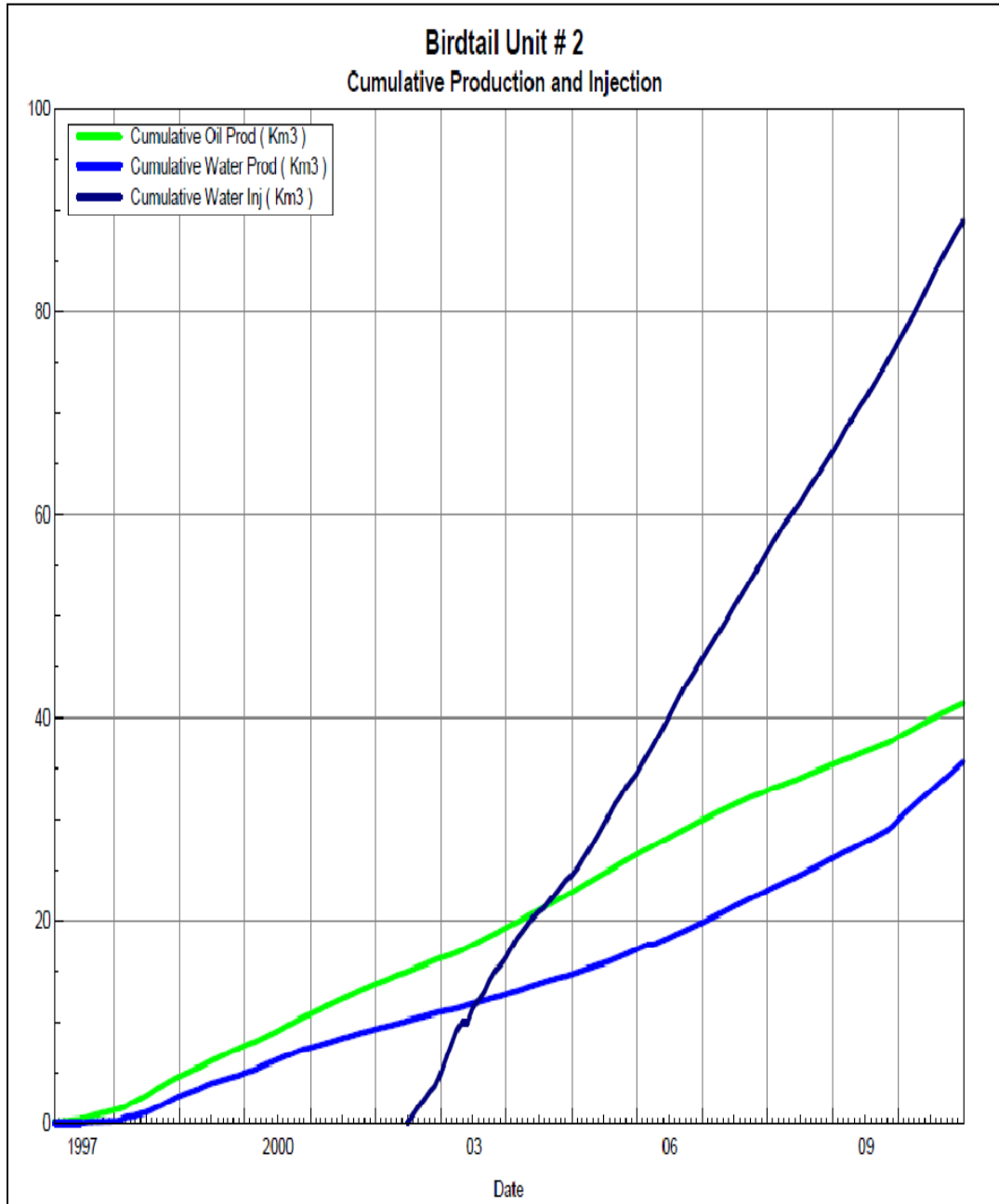


Figure 3 shows the cumulative production for Birdtail Unit No. 2 to the end of December 2010 as 41.4 E³m³ of oil, and 35.6 E³m³ of water. The cumulative water injected is 28.1 E³m³. Original Oil In Place of Birdtail Unit No. 2 is 393 E³m³. In 2010, recovery

factor of Birdtail Unit No. 2 is 10.5%. The cumulative volume of oil, and water produced and fluid injected for each injection pattern and for the whole project for each injection well is presented in Appendix D.

Figure 3: Birdtail Unit No. 1 Cumulative Oil, Water and Water Injected vs. Time



Waterflood History

As of December 2010 the Unit has 2 active vertical injectors. At year end 2010, Birdtail Unit No. 2 waterflood has 2 injector patterns in place, one injector on the west side 02/02-19-016-27W1/0, other on the east side at 00/04-20-016-27W1/0. Water injection

started in June 2002. An overall summary for each injector pattern is presented in Appendix C.

Any future revisions to the waterflood development or surveillance plan would be based on new production or performance response data, technical studies, or observed reservoir behavior and reserves recovery interpretations.

Waterflood EOR Operations

Water Source and Quality

The injection water for Birdtail Unit No. 2 is sourced from the 00/02-19-016-27W/2 well (Lodgepole formation). The water is treated at the 09-05-16-27W1 battery where it is filtered to 0.5 microns and has scale inhibitor added.

Injection Wellhead Pressures

The monthly wellhead injection pressures for each injection well is summarized in Appendix B, and shows all injection pressure since 2003. In 2010, Average injection pressure of injector 00/04-20-016-27W1/0 was 8002 kPag and 7993 kPag for injector 02/02-19-016-27W1/0.

Reservoir Pressure

No reservoir pressure measurements were taken at Birdtail Unit No. 2 in 2010.

Well Servicing

No maintenance was required on the 11 wells in Birdtail Unit No. 2, in 2010.

Voidage Replacement

Cumulative voidage for the Birdtail Unit No. 2 was 1.59 in December 2010. This is reasonable considering that the wells within the unit have been producing for almost fourteen years. As of 2002, monthly voidage is significantly greater than 1, which puts the Birdtail Unit No. 2 on track to achieve a cumulative VRR of approximately 2. Calculation, plots and tables of the Voidage replacement ratio on a monthly and cumulative basis for each injection pattern and for the project area are presented in Appendix D.

Waterflood Performance Discussion

The original oil-in-place (OOIP) of 393,000 m³ with cumulative oil recovered to date of 41,400 m³ results in a recovery factor of 10.5%. The ultimate expected recoverable reserve based on decline analysis is 70,000 m³ or an ultimate recovery factor of 17.8%.

The overall performance of this waterflood has been good as indicated by an expected recovery factor of 17.8% and increased or flattened oil production since water injection began in 2002. It appears that the 2 water injectors are well placed and there are no water breakthrough issues that would lower the sweep efficiency

Trends in production since 2010 have seen a decline in inflow and oil cut in some of the vertical producers. This corresponds to the same timing that the only horizontal well in the pool (well 02/07-19-016-27W1/0) commenced production. Even though total field voidage has been maintained well above unity, it may be that local withdrawals of fluid from the horizontal well are resulting in lower pressures and drainage. Optimization of the waterflood will be evaluated to address localized withdrawal rates, likely at the same time as facility enhancements are made to increase water handling capacity.

List of Appendices

Appendix A: Well Name and Well Status

Appendix B: Monthly Injection Wellhead Pressures Table and Plots

Appendix C: Birdtail Unit No. 2 Injection Pattern Summary

Appendix D: Injector Pattern Production/Injection Rates, Cumulative and VRRs

Plots and Tables for the following injectors:

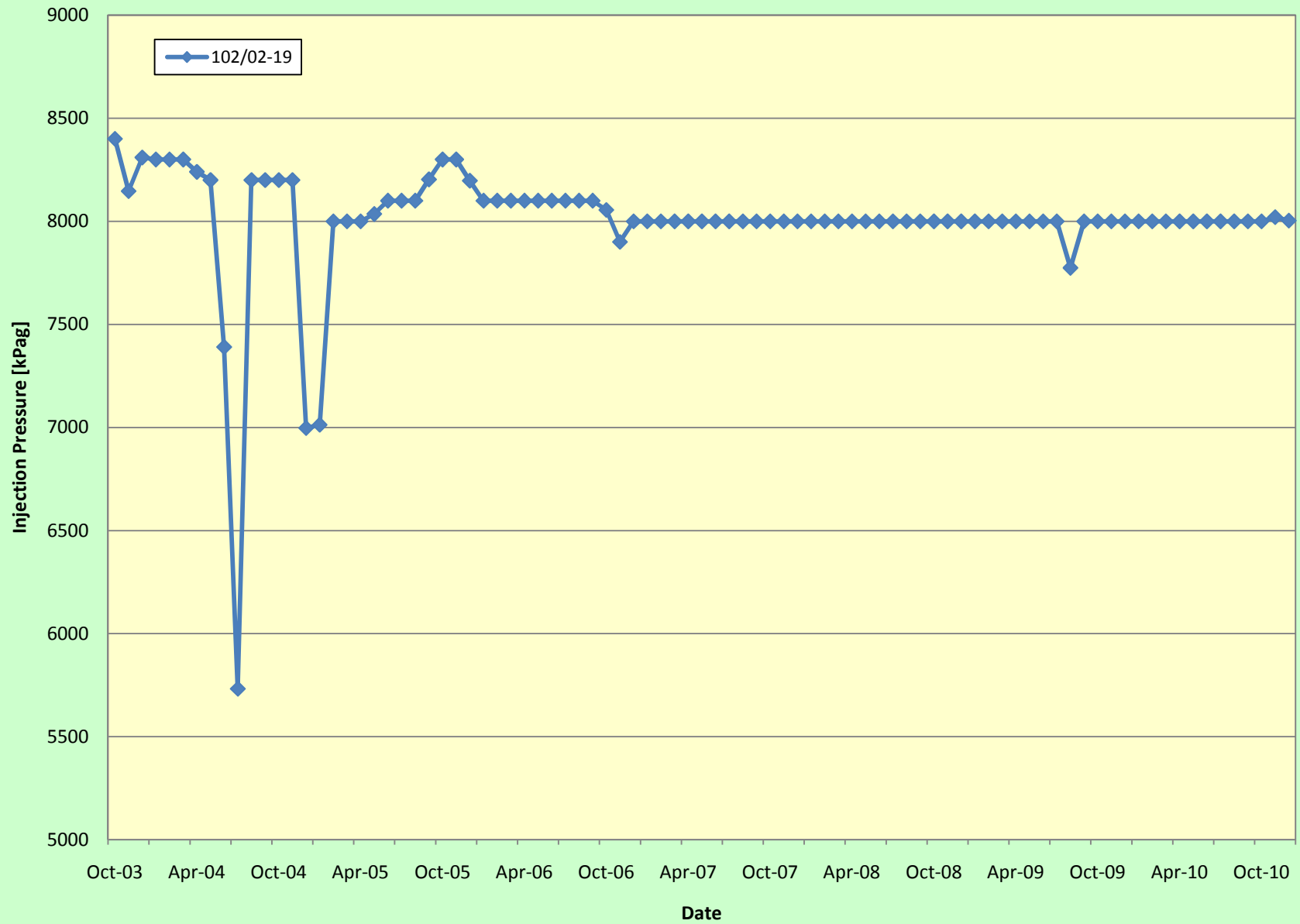
00/04-20-016-27W1/0

02/02-19-016-27W1/0

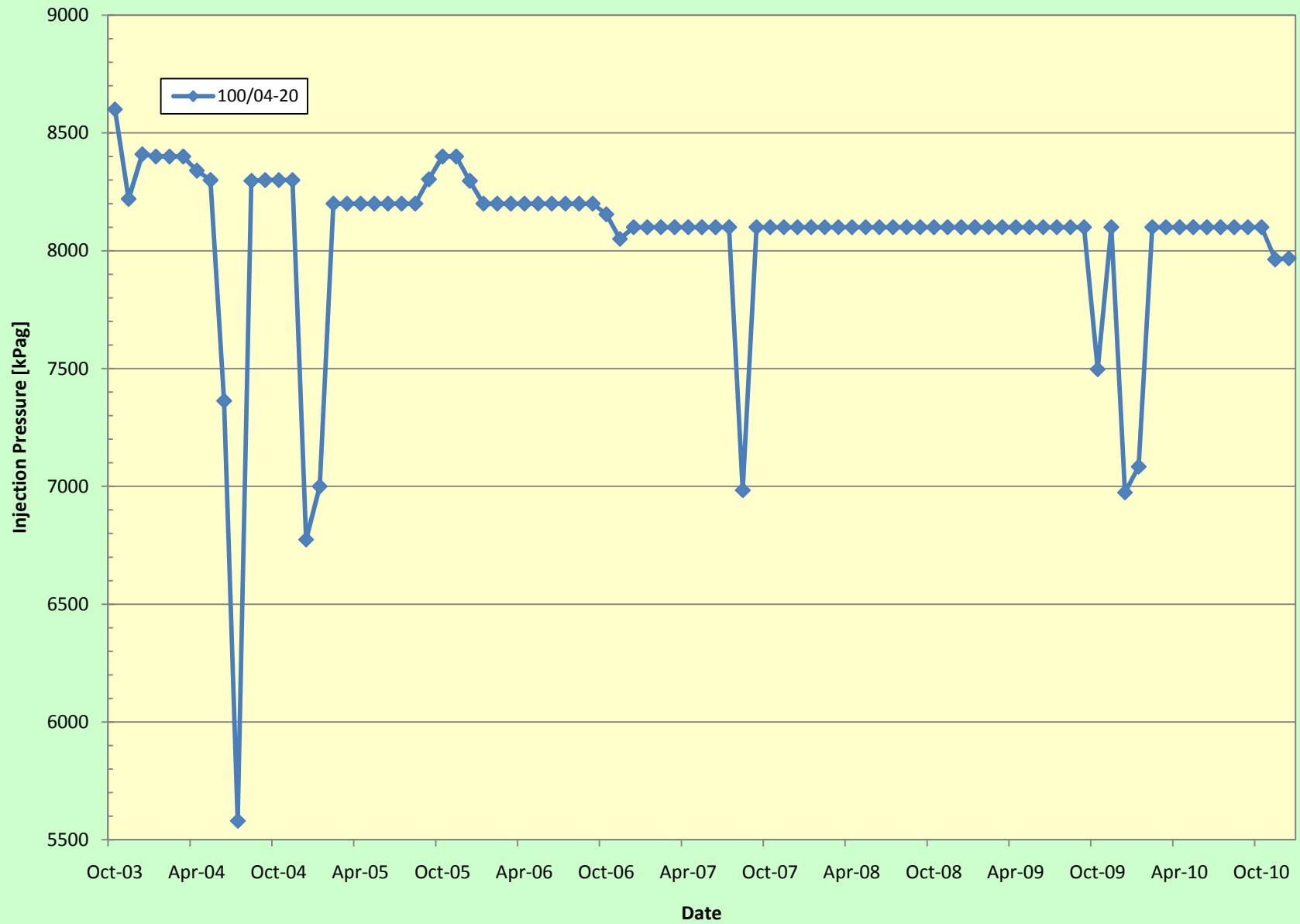
Appendix A

UWI	Surface Location	Well Status
100/15-18-016-27W1/00		ABD Producer
100/16-18-016-27W1/00		Capable of OIL Prod
100/01-19-016-27W1/00		Capable of OIL Prod
100/02-19-016-27W1/00		ABD Producer
102/02-19-016-27W1/00		WTR Injection
100/07-19-016-27W1/00		Capable of OIL Prod
102/07-19-016-27W1/00	100/05-20-016-27W1/00	Capable of OIL Prod
100/08-19-016-27W1/00		Capable of OIL Prod
100/03-20-016-27W1/00		Capable of OIL Prod
100/04-20-016-27W1/00		WTR Injection
100/05-20-016-27W1/00		Capable of OIL Prod

102/02-19 Injection Pressures vs Time



100/04-20 Injection Pressures vs Time



Appendix B

Average Monthly Injection Pressure (kPag)

Month	Pattern	
	100/04-20	102/02-19
Oct-03	8600	8400
Nov-03	8220	8147
Dec-03	8410	8310
Jan-04	8400	8300
Feb-04	8400	8300
Mar-04	8400	8300
Apr-04	8340	8240
May-04	8300	8200
Jun-04	7363	7390
Jul-04	5581	5732
Aug-04	8297	8200
Sep-04	8300	8200
Oct-04	8300	8200
Nov-04	8300	8200
Dec-04	6774	6997
Jan-05	7000	7013
Feb-05	8200	8000
Mar-05	8200	8000
Apr-05	8200	8000
May-05	8200	8035
Jun-05	8200	8100
Jul-05	8200	8100
Aug-05	8200	8100
Sep-05	8303	8203
Oct-05	8400	8300
Nov-05	8400	8300
Dec-05	8297	8197
Jan-06	8200	8100
Feb-06	8200	8100
Mar-06	8200	8100
Apr-06	8200	8100
May-06	8200	8100
Jun-06	8200	8100
Jul-06	8200	8100
Aug-06	8200	8100
Sep-06	8200	8100
Oct-06	8155	8055
Nov-06	8050	7900
Dec-06	8100	8000
Jan-07	8100	8000
Feb-07	8100	8000
Mar-07	8100	8000

Appendix B

Average Monthly Injection Pressure (kPag)

Month	Pattern	
	100/04-20	102/02-19
Apr-07	8100	8000
May-07	8100	8000
Jun-07	8100	8000
Jul-07	8100	8000
Aug-07	6984	8000
Sep-07	8100	8000
Oct-07	8100	8000
Nov-07	8100	8000
Dec-07	8100	8000
Jan-08	8100	8000
Feb-08	8100	8000
Mar-08	8100	8000
Apr-08	8100	8000
May-08	8100	8000
Jun-08	8100	8000
Jul-08	8100	8000
Aug-08	8100	8000
Sep-08	8100	8000
Oct-08	8100	8000
Nov-08	8100	8000
Dec-08	8100	8000
Jan-09	8100	8000
Feb-09	8100	8000
Mar-09	8100	8000
Apr-09	8100	8000
May-09	8100	8000
Jun-09	8100	8000
Jul-09	8100	8000
Aug-09	8100	7774
Sep-09	8100	8000
Oct-09	7497	8000
Nov-09	8100	8000
Dec-09	6974	8000
Jan-10	7084	8000
Feb-10	8100	8000
Mar-10	8100	8000
Apr-10	8100	8000
May-10	8100	8000
Jun-10	8100	8000
Jul-10	8100	8000
Aug-10	8100	8000
Sep-10	8100	8000

Appendix B

Average Monthly Injection Pressure (kPag)

Month	Pattern	
	100/04-20	102/02-19
Oct-10	8100	8000
Nov-10	7963	8020
Dec-10	7968	8003

Pattern Name	Injector Location (016-27W1)	Status	Supported Wells (016-27W1)	No. of Supported Wells	Allocation Factor	Pattern Prod Start Month	Inj Start Month	Oil Rate (m³/d)	Water Rate (m³/d)	WOR (m³/m³)	Water Injection (m³/d)	Cum Oil (E³m³)	Cum Water (E³m³)	Cum Inj Water (E³m³)	Monthly VRR	Cum VRR
00/04-20-16-27W1 Injector	00/04-20	WTR Injection	01-19, 03-20, 05-20, 08-19, 16-18, 07-19(Surf. 05-20)	6	0.5	Jan 1997	Jul 2002	6.0	12.3	1.98	22.3	27.1	19.2	65.9	1.6	2.45
02/02-19-016-27W1 Injector	02/02-19	WTR Injection	01-19, 07-19, 08-19, 15-18, 16-18, 07-19(Surf. 05-20)	7	0.5	Jul 1997	Jun 2002	5.5	10.3	1.87	5.7	16.0	19.6	23.0	0.5	0.95

Appendix C

Oil Formation Vol. Factor : 1.06 m3/m3

Completions Selected (11)

Oil Rate (CD) : 7.42 m3/d

Water Formation Vol Factor : 1.00 m3/m3

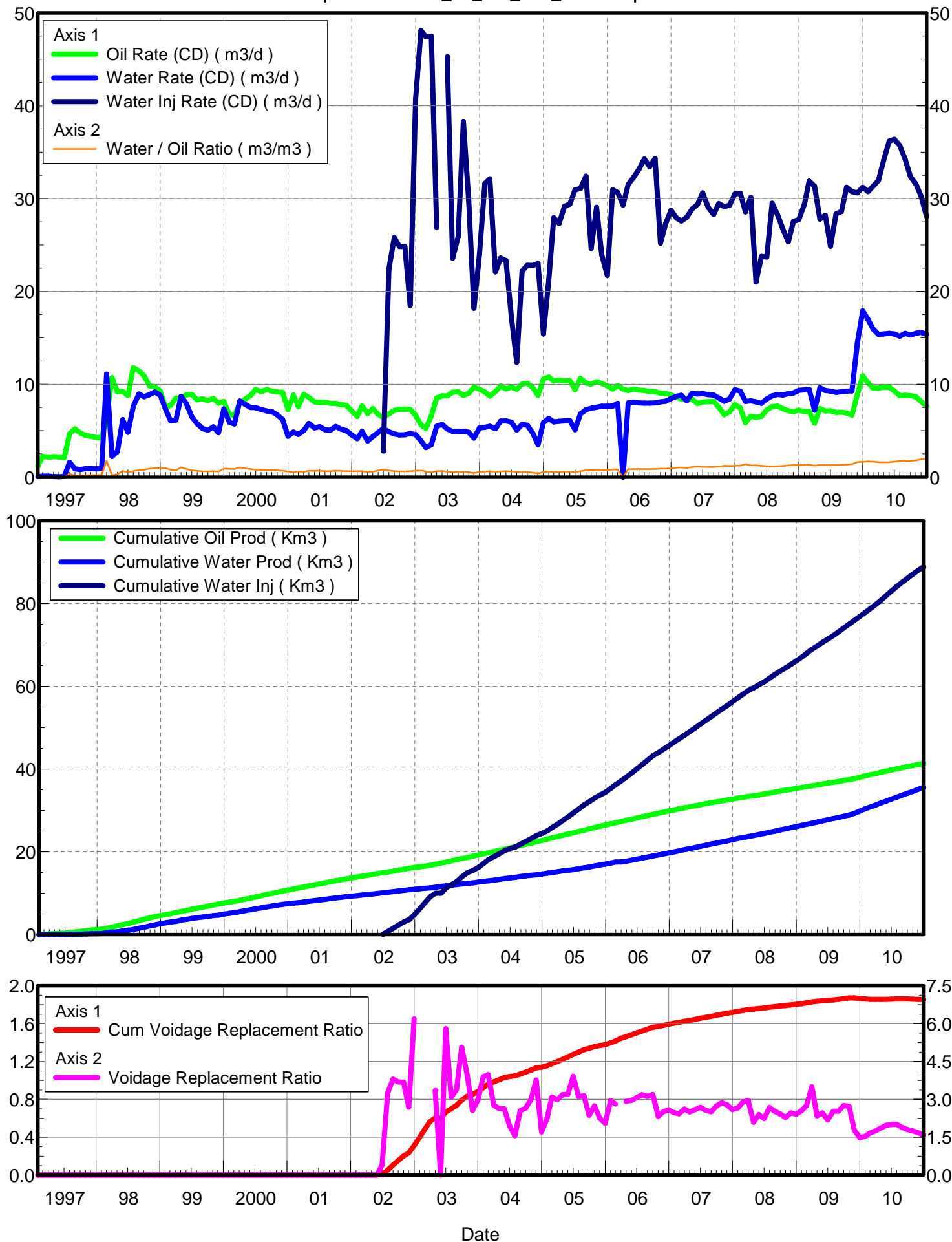
July 15, 2011

Water Rate (CD) : 14.74 m3/d

Water / Oil Ratio : 1.99 m3/m3

Operator: Tundra_Oil_and_Gas_Patnership

Water Inj Rate (CD) : 27.54 m3/d



Date	Oil Rate (CD) m3/d	Water Rate (CD) m3/d	Water Oil Ratio m3/m3	Water Inj Rate (CD) m3/d	Cum Oil Prod Km3	Cum Water Prod Km3	Cum Water Inj Km3	Voidage Replacement Ratio	Cum Voidage Replacement Ratio
1/31/1997	1.23	0.05	0.04		0.04	0.00	0.00	0.000	0.000
2/28/1997	2.22	0.10	0.05		0.10	0.00	0.00	0.000	0.000
3/31/1997	2.14	0.09	0.04		0.17	0.01	0.00	0.000	0.000
4/30/1997	2.19	0.06	0.03		0.23	0.01	0.00	0.000	0.000
5/31/1997	2.17	0.03	0.01		0.30	0.01	0.00	0.000	0.000
6/30/1997	2.09	0.09	0.04		0.36	0.01	0.00	0.000	0.000
7/31/1997	4.68	1.59	0.34		0.51	0.06	0.00	0.000	0.000
8/31/1997	5.18	0.89	0.17		0.67	0.09	0.00	0.000	0.000
9/30/1997	4.76	0.82	0.17		0.81	0.11	0.00	0.000	0.000
10/31/1997	4.50	0.91	0.20		0.95	0.14	0.00	0.000	0.000
11/30/1997	4.39	0.94	0.21		1.08	0.17	0.00	0.000	0.000
12/31/1997	4.26	0.87	0.20		1.21	0.20	0.00	0.000	0.000
1/31/1998	4.25	0.97	0.23		1.35	0.23	0.00	0.000	0.000
2/28/1998	6.41	11.10	1.73		1.53	0.54	0.00	0.000	0.000
3/31/1998	10.71	2.22	0.21		1.86	0.61	0.00	0.000	0.000
4/30/1998	9.19	2.76	0.30		2.13	0.69	0.00	0.000	0.000
5/31/1998	9.23	6.18	0.67		2.42	0.88	0.00	0.000	0.000
6/30/1998	8.79	4.84	0.55		2.68	1.03	0.00	0.000	0.000
7/31/1998	11.78	7.61	0.65		3.05	1.26	0.00	0.000	0.000
8/31/1998	11.45	8.95	0.78		3.40	1.54	0.00	0.000	0.000
9/30/1998	10.91	8.66	0.79		3.73	1.80	0.00	0.000	0.000
10/31/1998	9.84	8.88	0.90		4.04	2.07	0.00	0.000	0.000
11/30/1998	9.73	9.17	0.94		4.33	2.35	0.00	0.000	0.000
12/31/1998	9.28	8.82	0.95		4.61	2.62	0.00	0.000	0.000
1/31/1999	7.51	7.32	0.97		4.85	2.85	0.00	0.000	0.000
2/28/1999	7.73	6.08	0.79		5.06	3.02	0.00	0.000	0.000
3/31/1999	8.50	6.15	0.72		5.33	3.21	0.00	0.000	0.000
4/30/1999	8.41	8.71	1.04		5.58	3.47	0.00	0.000	0.000
5/31/1999	8.87	7.91	0.89		5.86	3.72	0.00	0.000	0.000
6/30/1999	8.90	6.50	0.73		6.12	3.91	0.00	0.000	0.000
7/31/1999	8.32	5.73	0.69		6.38	4.09	0.00	0.000	0.000
8/31/1999	8.44	5.23	0.62		6.64	4.25	0.00	0.000	0.000
9/30/1999	8.25	5.06	0.61		6.89	4.40	0.00	0.000	0.000
10/31/1999	8.47	5.40	0.64		7.15	4.57	0.00	0.000	0.000
11/30/1999	7.97	4.78	0.60		7.39	4.71	0.00	0.000	0.000
12/31/1999	8.15	7.34	0.90		7.64	4.94	0.00	0.000	0.000
1/31/2000	6.73	5.90	0.88		7.85	5.13	0.00	0.000	0.000
2/29/2000	6.65	5.72	0.86		8.04	5.29	0.00	0.000	0.000
3/31/2000	7.97	8.19	1.03		8.29	5.54	0.00	0.000	0.000
4/30/2000	8.40	7.84	0.93		8.54	5.78	0.00	0.000	0.000
5/31/2000	8.79	7.50	0.85		8.82	6.01	0.00	0.000	0.000
6/30/2000	9.44	7.49	0.79		9.10	6.24	0.00	0.000	0.000
7/31/2000	9.20	7.28	0.79		9.38	6.46	0.00	0.000	0.000
8/31/2000	9.44	7.13	0.76		9.68	6.68	0.00	0.000	0.000
9/30/2000	9.27	7.06	0.76		9.96	6.90	0.00	0.000	0.000
10/31/2000	9.17	6.71	0.73		10.24	7.10	0.00	0.000	0.000
11/30/2000	9.13	6.20	0.68		10.51	7.29	0.00	0.000	0.000
12/31/2000	7.29	4.40	0.60		10.74	7.43	0.00	0.000	0.000

Date	Oil Rate (CD) m3/d	Water Rate (CD) m3/d	Water Oil Ratio m3/m3	Water Inj Rate (CD) m3/d	Cum Oil Prod Km3	Cum Water Prod Km3	Cum Water Inj Km3	Voidage Replacement Ratio	Cum Voidage Replacement Ratio
1/31/2001	8.83	4.86	0.55		11.01	7.58	0.00	0.000	0.000
2/28/2001	7.61	4.60	0.61		11.23	7.71	0.00	0.000	0.000
3/31/2001	8.89	5.00	0.56		11.50	7.86	0.00	0.000	0.000
4/30/2001	8.60	5.79	0.67		11.76	8.03	0.00	0.000	0.000
5/31/2001	8.10	5.29	0.65		12.01	8.20	0.00	0.000	0.000
6/30/2001	8.05	5.43	0.67		12.25	8.36	0.00	0.000	0.000
7/31/2001	8.07	5.09	0.63		12.50	8.52	0.00	0.000	0.000
8/31/2001	7.95	5.05	0.64		12.75	8.68	0.00	0.000	0.000
9/30/2001	7.96	5.46	0.69		12.99	8.84	0.00	0.000	0.000
10/31/2001	7.78	5.15	0.66		13.23	9.00	0.00	0.000	0.000
11/30/2001	7.74	5.01	0.65		13.46	9.15	0.00	0.000	0.000
12/31/2001	7.13	4.53	0.63		13.68	9.29	0.00	0.000	0.000
1/31/2002	6.53	4.14	0.63		13.88	9.42	0.00	0.000	0.000
2/28/2002	7.65	4.91	0.64		14.10	9.56	0.00	0.000	0.000
3/31/2002	6.85	3.89	0.57		14.31	9.68	0.00	0.000	0.000
4/30/2002	7.39	4.36	0.59		14.53	9.81	0.00	0.000	0.000
5/31/2002	6.75	4.81	0.71		14.74	9.96	0.00	0.000	0.000
6/30/2002	6.42	5.22	0.81	2.82	14.93	10.11	0.08	0.394	0.006
7/31/2002	6.82	4.87	0.71	22.44	15.15	10.26	0.78	3.247	0.053
8/31/2002	7.18	4.65	0.65	25.79	15.37	10.41	1.58	3.797	0.105
9/30/2002	7.29	4.54	0.62	24.83	15.59	10.54	2.32	3.694	0.153
10/31/2002	7.32	4.56	0.62	24.84	15.81	10.69	3.09	3.676	0.201
11/30/2002	7.30	4.69	0.64	18.49	16.03	10.83	3.65	2.689	0.234
12/31/2002	6.65	4.58	0.69	40.70	16.24	10.97	4.91	6.190	0.310
1/31/2003	5.62	3.92	0.70	48.11	16.41	11.09	6.40	8.589	0.400
2/28/2003	5.26	3.18	0.60	47.41	16.56	11.18	7.73	9.976	0.479
3/31/2003	6.59	3.50	0.53	47.50	16.77	11.29	9.20	8.679	0.564
4/30/2003	8.52	5.48	0.64	26.89	17.02	11.45	10.01	3.350	0.605
5/31/2003	8.74	5.67	0.65		17.29	11.63	10.01	0.000	0.596
6/30/2003	8.76	5.18	0.59	45.26	17.55	11.78	11.37	5.800	0.667
7/31/2003	9.15	4.92	0.54	23.57	17.84	11.94	12.10	3.081	0.700
8/31/2003	9.20	4.90	0.53	25.91	18.12	12.09	12.90	3.387	0.737
9/30/2003	8.80	4.93	0.56	38.30	18.39	12.23	14.05	5.064	0.792
10/31/2003	9.03	4.83	0.54	29.71	18.67	12.38	14.97	3.943	0.833
11/30/2003	9.68	4.21	0.43	18.17	18.96	12.51	15.52	2.557	0.853
12/31/2003	9.45	5.29	0.56	24.03	19.25	12.68	16.26	2.959	0.882
1/31/2004	9.18	5.36	0.58	31.62	19.53	12.84	17.24	3.900	0.923
2/29/2004	8.72	5.47	0.63	32.13	19.79	13.00	18.17	3.976	0.960
3/31/2004	9.22	5.22	0.57	22.11	20.07	13.16	18.86	2.772	0.984
4/30/2004	9.80	6.03	0.62	23.59	20.37	13.34	19.57	2.631	1.007
5/31/2004	9.51	6.05	0.64	23.32	20.66	13.53	20.29	2.622	1.029
6/30/2004	9.69	5.91	0.61	17.28	20.95	13.71	20.81	1.962	1.042
7/31/2004	9.45	5.08	0.54	12.35	21.25	13.86	21.19	1.562	1.048
8/31/2004	10.03	5.68	0.57	22.18	21.56	14.04	21.88	2.555	1.068
9/30/2004	10.11	5.57	0.55	22.80	21.86	14.21	22.56	2.652	1.087
10/31/2004	9.64	4.72	0.49	22.79	22.16	14.35	23.27	2.997	1.109
11/30/2004	8.80	3.49	0.40	23.02	22.42	14.46	23.96	3.762	1.132
12/31/2004	10.58	5.88	0.56	15.41	22.75	14.64	24.44	1.705	1.139

Date	Oil Rate (CD) m3/d	Water Rate (CD) m3/d	Water Oil Ratio m3/m3	Water Inj Rate (CD) m3/d	Cum Oil Prod Km3	Cum Water Prod Km3	Cum Water Inj Km3	Voidage Replacement Ratio	Cum Voidage Replacement Ratio
1/31/2005	10.77	6.32	0.59	21.22	23.08	14.84	25.09	2.224	1.154
2/28/2005	10.36	5.94	0.57	27.94	23.37	15.00	25.88	3.093	1.176
3/31/2005	10.47	6.02	0.57	27.31	23.70	15.19	26.72	2.984	1.199
4/30/2005	10.36	6.06	0.58	29.16	24.01	15.37	27.60	3.184	1.224
5/31/2005	10.40	6.07	0.58	29.41	24.33	15.56	28.51	3.201	1.248
6/30/2005	9.41	5.10	0.54	30.95	24.62	15.71	29.44	3.910	1.276
7/31/2005	10.63	6.81	0.64	31.07	24.94	15.92	30.40	3.110	1.300
8/31/2005	10.13	7.26	0.72	32.41	25.26	16.15	31.41	3.148	1.325
9/30/2005	10.01	7.40	0.74	24.64	25.56	16.37	32.15	2.370	1.338
10/31/2005	10.26	7.52	0.73	29.05	25.88	16.60	33.05	2.743	1.357
11/30/2005	10.08	7.63	0.76	23.95	26.18	16.83	33.76	2.249	1.369
12/31/2005	9.83	7.63	0.78	21.72	26.48	17.07	34.44	2.055	1.378
1/31/2006	9.48	7.65	0.81	30.95	26.78	17.31	35.40	2.951	1.398
2/28/2006	9.87	7.94	0.80	30.65	27.05	17.53	36.26	2.813	1.415
3/31/2006	9.48	0.00	0.00	29.30	27.35	17.53	37.16	10.331	1.445
4/30/2006	9.32	8.00	0.86	31.52	27.63	17.77	38.11	2.922	1.464
5/31/2006	9.48	8.07	0.85	32.29	27.92	18.02	39.11	2.959	1.483
6/30/2006	9.36	7.99	0.85	33.14	28.20	18.26	40.10	3.070	1.502
7/31/2006	9.34	7.98	0.85	34.26	28.49	18.51	41.17	3.181	1.523
8/31/2006	9.22	7.96	0.86	33.44	28.78	18.75	42.20	3.119	1.542
9/30/2006	9.19	8.00	0.87	34.31	29.05	18.99	43.23	3.193	1.561
10/31/2006	9.04	8.09	0.90	25.20	29.33	19.24	44.01	2.334	1.571
11/30/2006	9.02	8.16	0.90	27.29	29.60	19.49	44.83	2.514	1.582
12/31/2006	8.85	8.47	0.96	28.73	29.88	19.75	45.72	2.584	1.594
1/31/2007	8.62	8.71	1.01	27.88	30.15	20.02	46.59	2.469	1.604
2/28/2007	8.43	8.82	1.05	27.58	30.38	20.27	47.36	2.433	1.613
3/31/2007	8.33	8.21	0.99	27.97	30.64	20.52	48.23	2.613	1.624
4/30/2007	8.39	9.05	1.08	28.88	30.89	20.79	49.09	2.499	1.634
5/31/2007	7.92	8.96	1.13	29.36	31.14	21.07	50.00	2.592	1.645
6/30/2007	8.07	9.00	1.11	30.61	31.38	21.34	50.92	2.682	1.657
7/31/2007	8.13	8.87	1.09	29.04	31.63	21.62	51.82	2.568	1.667
8/31/2007	8.15	8.84	1.09	28.30	31.88	21.89	52.70	2.510	1.677
9/30/2007	7.53	8.52	1.13	29.45	32.11	22.15	53.58	2.734	1.687
10/31/2007	6.73	8.17	1.22	29.15	32.32	22.40	54.49	2.861	1.699
11/30/2007	7.04	8.41	1.19	29.28	32.53	22.65	55.37	2.784	1.710
12/31/2007	7.81	9.43	1.21	30.50	32.77	22.94	56.31	2.593	1.719
1/31/2008	7.45	9.26	1.24	30.56	33.00	23.23	57.26	2.659	1.729
2/29/2008	5.86	8.14	1.39	28.56	33.17	23.47	58.09	2.886	1.739
3/31/2008	6.57	8.22	1.25	30.14	33.38	23.72	59.02	2.959	1.751
4/30/2008	6.44	8.09	1.26	21.00	33.57	23.97	59.65	2.095	1.754
5/31/2008	6.55	7.95	1.21	23.77	33.77	24.21	60.39	2.399	1.760
6/30/2008	7.22	8.41	1.16	23.70	33.99	24.46	61.10	2.243	1.764
7/31/2008	7.58	8.75	1.15	29.50	34.23	24.73	62.01	2.678	1.773
8/31/2008	7.65	8.91	1.16	28.28	34.46	25.01	62.89	2.524	1.780
9/30/2008	7.36	8.83	1.20	26.72	34.68	25.28	63.69	2.421	1.786
10/31/2008	7.15	8.98	1.26	25.34	34.90	25.55	64.48	2.278	1.791
11/30/2008	7.03	9.07	1.29	27.53	35.12	25.83	65.30	2.464	1.797
12/31/2008	7.22	9.36	1.30	27.75	35.34	26.12	66.16	2.409	1.803

Date	Oil Rate (CD) m3/d	Water Rate (CD) m3/d	Water Oil Ratio m3/m3	Water Inj Rate (CD) m3/d	Cum Oil Prod Km3	Cum Water Prod Km3	Cum Water Inj Km3	Voidage Replacement Ratio	Cum Voidage Replacement Ratio
1/31/2009	7.06	9.40	1.33	29.39	35.56	26.41	67.07	2.553	1.810
2/28/2009	7.08	9.47	1.34	31.87	35.76	26.67	67.97	2.751	1.819
3/31/2009	5.80	7.21	1.24	31.33	35.94	26.90	68.94	3.500	1.831
4/30/2009	7.39	9.61	1.30	27.77	36.16	27.19	69.77	2.350	1.836
5/31/2009	7.12	9.33	1.31	28.19	36.38	27.47	70.64	2.460	1.842
6/30/2009	7.14	9.25	1.30	24.86	36.59	27.75	71.39	2.183	1.845
7/31/2009	6.97	9.14	1.31	28.33	36.81	28.04	72.27	2.524	1.851
8/31/2009	6.98	9.19	1.32	28.60	37.03	28.32	73.15	2.536	1.857
9/30/2009	6.91	9.26	1.34	31.20	37.23	28.60	74.09	2.754	1.864
10/31/2009	6.68	9.29	1.39	30.75	37.44	28.89	75.04	2.722	1.872
11/30/2009	8.90	14.43	1.62	30.62	37.71	29.32	75.96	1.791	1.871
12/31/2009	10.90	17.91	1.64	31.22	38.04	29.87	76.93	1.475	1.865
1/31/2010	10.12	16.97	1.68	30.74	38.36	30.40	77.88	1.537	1.860
2/28/2010	9.59	15.95	1.66	31.33	38.63	30.85	78.76	1.665	1.857
3/31/2010	9.57	15.37	1.61	31.94	38.92	31.32	79.75	1.752	1.856
4/30/2010	9.69	15.42	1.59	34.11	39.21	31.79	80.77	1.862	1.856
5/31/2010	9.69	15.48	1.60	36.19	39.51	32.27	81.90	1.968	1.858
6/30/2010	9.29	15.42	1.66	36.38	39.79	32.73	82.99	1.999	1.859
7/31/2010	8.77	15.16	1.73	35.72	40.07	33.20	84.09	2.009	1.861
8/31/2010	8.82	15.47	1.75	34.24	40.34	33.68	85.16	1.891	1.861
9/30/2010	8.77	15.31	1.75	32.36	40.60	34.14	86.13	1.805	1.861
10/31/2010	8.67	15.47	1.78	31.56	40.87	34.62	87.10	1.747	1.859
11/30/2010	8.15	15.60	1.91	30.29	41.12	35.08	88.01	1.679	1.857
12/31/2010	7.65	15.34	2.01	28.05	41.35	35.56	88.88	1.591	1.854

Pattern: 4-20-16-27 Set: Birdtail Unit #2

Oil Formation Vol. Factor : 1.05 m3/m3

Water Formation Vol Factor : 1.00 m3/m3

Water / Oil Ratio : 1.89 m3/m3

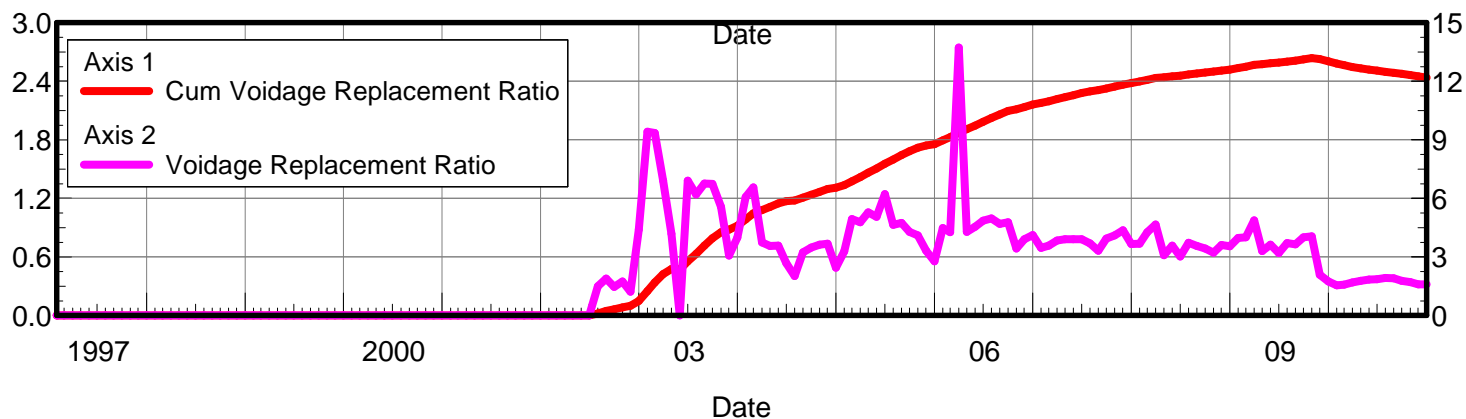
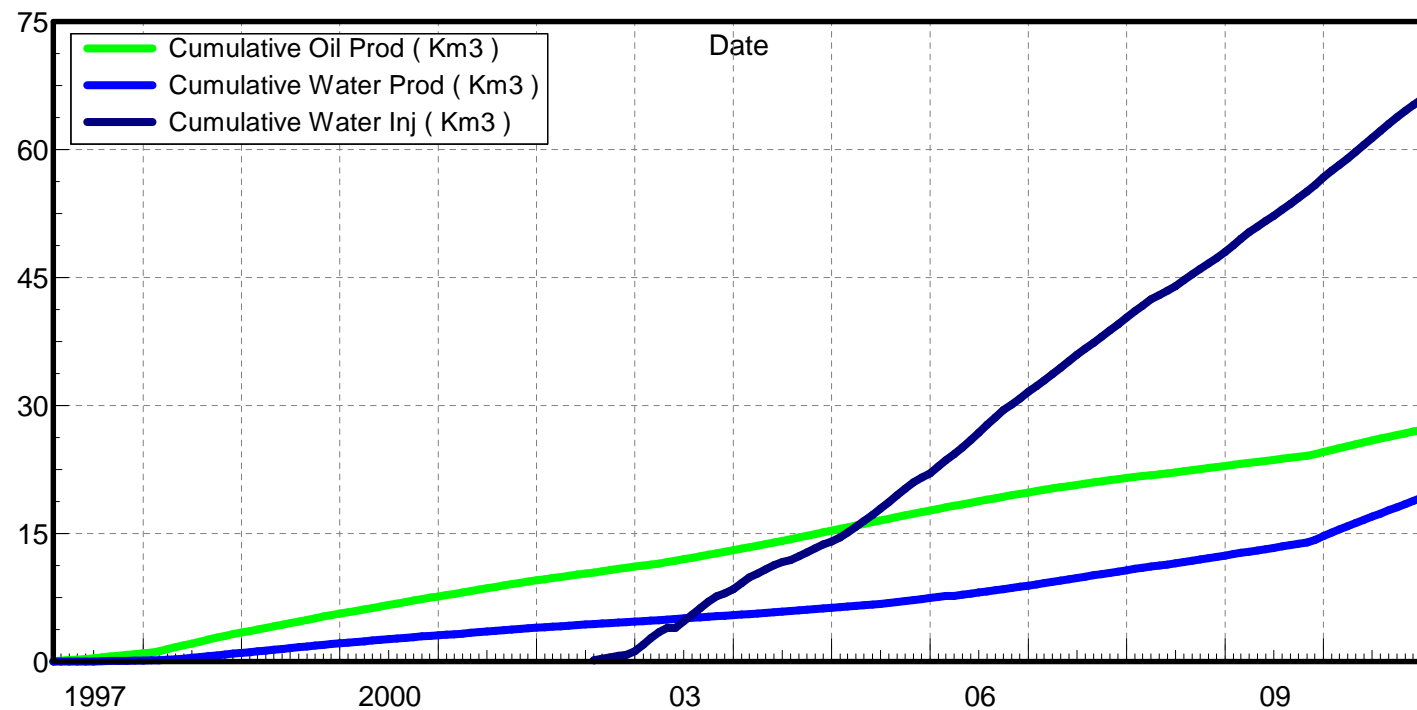
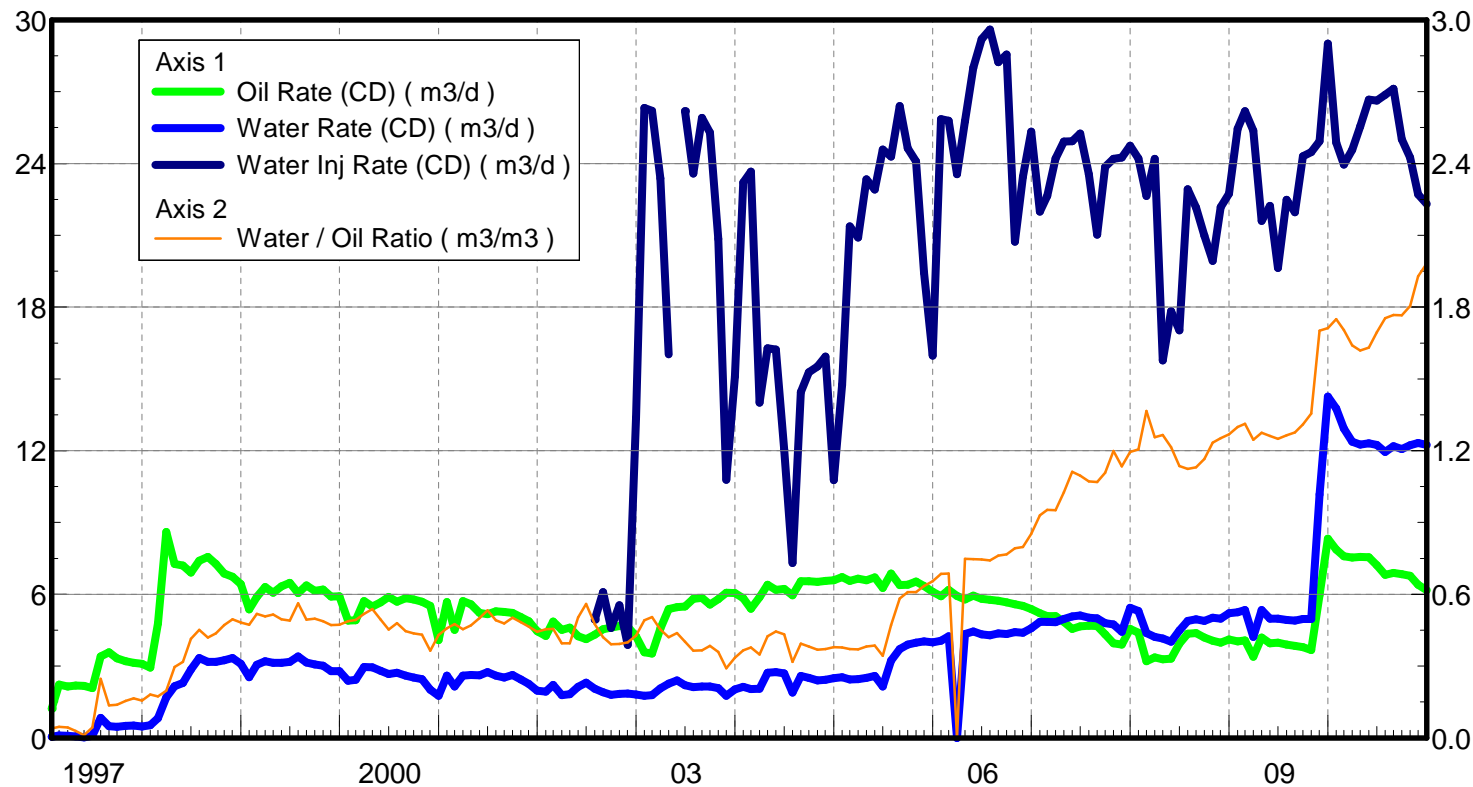
July 26, 2011

Operator: Tundra_Oil_and_Gas_Patnership

Oil Rate (CD) : 6.22 m3/d

Water Rate (CD) : 11.78 m3/d

Water Inj Rate (CD) : 20.55 m3/d



Date	Oil Rate (CD) m3/d	Water Rate (CD) m3/d	Water Oil Ratio m3/m3	Water Inj Rate (CD) m3/d	Cum Oil Prod Km3	Cum Water Prod Km3	Cum Water Inj Km3	Voidage Replacement Ratio	Cum Voidage Replacement Ratio
1/31/1997	1.23	0.05	0.04		0.04	0.00	0.00	0.000	0.000
2/28/1997	2.22	0.10	0.05		0.10	0.00	0.00	0.000	0.000
3/31/1997	2.14	0.09	0.04		0.17	0.01	0.00	0.000	0.000
4/30/1997	2.19	0.06	0.03		0.23	0.01	0.00	0.000	0.000
5/31/1997	2.17	0.03	0.01		0.30	0.01	0.00	0.000	0.000
6/30/1997	2.09	0.09	0.04		0.36	0.01	0.00	0.000	0.000
7/31/1997	3.40	0.84	0.25		0.47	0.04	0.00	0.000	0.000
8/31/1997	3.58	0.49	0.14		0.58	0.05	0.00	0.000	0.000
9/30/1997	3.33	0.46	0.14		0.68	0.07	0.00	0.000	0.000
10/31/1997	3.20	0.50	0.16		0.78	0.08	0.00	0.000	0.000
11/30/1997	3.14	0.52	0.17		0.87	0.10	0.00	0.000	0.000
12/31/1997	3.09	0.48	0.16		0.97	0.11	0.00	0.000	0.000
1/31/1998	2.94	0.53	0.18		1.06	0.13	0.00	0.000	0.000
2/28/1998	4.78	0.83	0.17		1.19	0.15	0.00	0.000	0.000
3/31/1998	8.60	1.70	0.20		1.46	0.21	0.00	0.000	0.000
4/30/1998	7.27	2.16	0.30		1.68	0.27	0.00	0.000	0.000
5/31/1998	7.20	2.29	0.32		1.90	0.34	0.00	0.000	0.000
6/30/1998	6.91	2.86	0.41		2.11	0.43	0.00	0.000	0.000
7/31/1998	7.40	3.34	0.45		2.34	0.53	0.00	0.000	0.000
8/31/1998	7.56	3.17	0.42		2.57	0.63	0.00	0.000	0.000
9/30/1998	7.27	3.17	0.44		2.79	0.72	0.00	0.000	0.000
10/31/1998	6.87	3.24	0.47		3.00	0.82	0.00	0.000	0.000
11/30/1998	6.74	3.34	0.50		3.21	0.93	0.00	0.000	0.000
12/31/1998	6.43	3.10	0.48		3.40	1.02	0.00	0.000	0.000
1/31/1999	5.37	2.54	0.47		3.57	1.10	0.00	0.000	0.000
2/28/1999	5.89	3.05	0.52		3.74	1.19	0.00	0.000	0.000
3/31/1999	6.30	3.20	0.51		3.93	1.28	0.00	0.000	0.000
4/30/1999	6.07	3.13	0.52		4.11	1.38	0.00	0.000	0.000
5/31/1999	6.34	3.14	0.50		4.31	1.48	0.00	0.000	0.000
6/30/1999	6.48	3.17	0.49		4.50	1.57	0.00	0.000	0.000
7/31/1999	6.06	3.40	0.56		4.69	1.68	0.00	0.000	0.000
8/31/1999	6.37	3.15	0.49		4.89	1.77	0.00	0.000	0.000
9/30/1999	6.15	3.07	0.50		5.07	1.87	0.00	0.000	0.000
10/31/1999	6.20	3.02	0.49		5.27	1.96	0.00	0.000	0.000
11/30/1999	5.91	2.79	0.47		5.44	2.04	0.00	0.000	0.000
12/31/1999	5.92	2.80	0.47		5.63	2.13	0.00	0.000	0.000
1/31/2000	4.91	2.39	0.49		5.78	2.20	0.00	0.000	0.000
2/29/2000	4.91	2.42	0.49		5.92	2.27	0.00	0.000	0.000
3/31/2000	5.72	2.97	0.52		6.10	2.37	0.00	0.000	0.000
4/30/2000	5.49	2.96	0.54		6.26	2.46	0.00	0.000	0.000
5/31/2000	5.67	2.80	0.49		6.44	2.54	0.00	0.000	0.000
6/30/2000	5.89	2.67	0.45		6.62	2.62	0.00	0.000	0.000
7/31/2000	5.69	2.73	0.48		6.79	2.71	0.00	0.000	0.000
8/31/2000	5.84	2.60	0.45		6.97	2.79	0.00	0.000	0.000
9/30/2000	5.79	2.52	0.44		7.15	2.86	0.00	0.000	0.000
10/31/2000	5.69	2.46	0.43		7.32	2.94	0.00	0.000	0.000
11/30/2000	5.51	2.01	0.36		7.49	3.00	0.00	0.000	0.000
12/31/2000	4.09	1.76	0.43		7.62	3.05	0.00	0.000	0.000

Date	Oil Rate (CD) m3/d	Water Rate (CD) m3/d	Water Oil Ratio m3/m3	Water Inj Rate (CD) m3/d	Cum Oil Prod Km3	Cum Water Prod Km3	Cum Water Inj Km3	Voidage Replacement Ratio	Cum Voidage Replacement Ratio
1/31/2001	5.67	2.60	0.46		7.79	3.13	0.00	0.000	0.000
2/28/2001	4.51	2.14	0.48		7.92	3.19	0.00	0.000	0.000
3/31/2001	5.72	2.60	0.45		8.09	3.28	0.00	0.000	0.000
4/30/2001	5.59	2.63	0.47		8.26	3.35	0.00	0.000	0.000
5/31/2001	5.23	2.62	0.50		8.42	3.44	0.00	0.000	0.000
6/30/2001	5.17	2.75	0.53		8.58	3.52	0.00	0.000	0.000
7/31/2001	5.29	2.60	0.49		8.74	3.60	0.00	0.000	0.000
8/31/2001	5.26	2.52	0.48		8.91	3.68	0.00	0.000	0.000
9/30/2001	5.23	2.63	0.50		9.06	3.76	0.00	0.000	0.000
10/31/2001	5.04	2.44	0.48		9.22	3.83	0.00	0.000	0.000
11/30/2001	4.87	2.26	0.46		9.37	3.90	0.00	0.000	0.000
12/31/2001	4.45	1.97	0.44		9.50	3.96	0.00	0.000	0.000
1/31/2002	4.26	1.93	0.45		9.64	4.02	0.00	0.000	0.000
2/28/2002	4.87	2.21	0.45		9.77	4.08	0.00	0.000	0.000
3/31/2002	4.51	1.78	0.40		9.91	4.14	0.00	0.000	0.000
4/30/2002	4.60	1.82	0.40		10.05	4.19	0.00	0.000	0.000
5/31/2002	4.25	2.14	0.50		10.18	4.26	0.00	0.000	0.000
6/30/2002	4.13	2.31	0.56		10.31	4.33	0.00	0.000	0.000
7/31/2002	4.31	2.05	0.48	4.94	10.44	4.39	0.15	1.480	0.020
8/31/2002	4.53	1.91	0.42	6.09	10.58	4.45	0.34	1.867	0.045
9/30/2002	4.61	1.80	0.39	4.59	10.72	4.50	0.48	1.443	0.062
10/31/2002	4.68	1.84	0.39	5.54	10.86	4.56	0.65	1.711	0.083
11/30/2002	4.65	1.86	0.40	3.89	11.00	4.62	0.77	1.196	0.097
12/31/2002	4.24	1.81	0.43	13.38	11.13	4.67	1.18	4.342	0.148
1/31/2003	3.58	1.76	0.49	26.32	11.25	4.73	2.00	9.297	0.247
2/28/2003	3.53	1.78	0.50	26.20	11.34	4.78	2.73	9.240	0.334
3/31/2003	4.56	2.06	0.45	23.38	11.49	4.84	3.46	6.822	0.418
4/30/2003	5.38	2.27	0.42	16.02	11.65	4.91	3.94	4.132	0.469
5/31/2003	5.47	2.40	0.44		11.82	4.98	3.94	0.000	0.462
6/30/2003	5.49	2.21	0.40	26.19	11.98	5.05	4.72	6.808	0.547
7/31/2003	5.81	2.12	0.36	23.57	12.16	5.12	5.45	6.112	0.623
8/31/2003	5.86	2.14	0.37	25.91	12.34	5.18	6.26	6.654	0.705
9/30/2003	5.57	2.14	0.39	25.29	12.51	5.25	7.02	6.640	0.781
10/31/2003	5.79	2.08	0.36	20.85	12.69	5.31	7.66	5.472	0.841
11/30/2003	6.06	1.76	0.29	10.78	12.87	5.36	7.99	3.016	0.867
12/31/2003	6.05	2.03	0.34	15.11	13.06	5.43	8.45	3.933	0.906
1/31/2004	5.84	2.13	0.37	23.21	13.24	5.49	9.17	5.981	0.970
2/29/2004	5.40	2.04	0.38	23.66	13.40	5.55	9.86	6.470	1.031
3/31/2004	5.88	2.05	0.35	14.01	13.58	5.62	10.29	3.680	1.064
4/30/2004	6.40	2.72	0.42	16.28	13.77	5.70	10.78	3.513	1.098
5/31/2004	6.18	2.75	0.44	16.23	13.96	5.78	11.29	3.531	1.133
6/30/2004	6.23	2.69	0.43	12.05	14.15	5.86	11.65	2.643	1.154
7/31/2004	5.96	1.90	0.32	7.31	14.33	5.92	11.87	1.985	1.163
8/31/2004	6.55	2.58	0.39	14.45	14.54	6.00	12.32	3.182	1.190
9/30/2004	6.55	2.50	0.38	15.28	14.73	6.08	12.78	3.425	1.219
10/31/2004	6.52	2.40	0.37	15.52	14.94	6.15	13.26	3.566	1.249
11/30/2004	6.56	2.43	0.37	15.93	15.13	6.22	13.74	3.624	1.278
12/31/2004	6.59	2.50	0.38	10.77	15.34	6.30	14.07	2.409	1.292

Date	Oil Rate (CD) m3/d	Water Rate (CD) m3/d	Water Oil Ratio m3/m3	Water Inj Rate (CD) m3/d	Cum Oil Prod Km3	Cum Water Prod Km3	Cum Water Inj Km3	Voidage Replacement Ratio	Cum Voidage Replacement Ratio
1/31/2005	6.72	2.54	0.38	14.75	15.54	6.38	14.53	3.241	1.317
2/28/2005	6.57	2.44	0.37	21.38	15.73	6.45	15.13	4.858	1.356
3/31/2005	6.65	2.46	0.37	20.91	15.93	6.53	15.78	4.700	1.397
4/30/2005	6.58	2.51	0.38	23.34	16.13	6.60	16.48	5.211	1.442
5/31/2005	6.71	2.59	0.39	22.91	16.34	6.68	17.19	4.987	1.486
6/30/2005	6.26	2.15	0.34	24.58	16.53	6.74	17.92	6.114	1.533
7/31/2005	6.87	3.24	0.47	24.29	16.74	6.85	18.68	4.591	1.576
8/31/2005	6.39	3.72	0.58	26.40	16.94	6.96	19.50	4.689	1.621
9/30/2005	6.40	3.89	0.61	24.64	17.13	7.08	20.24	4.243	1.658
10/31/2005	6.54	3.99	0.61	24.08	17.33	7.20	20.98	4.054	1.694
11/30/2005	6.35	4.03	0.63	19.43	17.52	7.32	21.56	3.278	1.716
12/31/2005	6.10	3.99	0.65	15.98	17.71	7.45	22.06	2.745	1.731
1/31/2006	5.91	4.05	0.69	25.85	17.90	7.57	22.86	4.440	1.769
2/28/2006	6.19	4.25	0.69	25.79	18.07	7.69	23.58	4.230	1.801
3/31/2006	5.94	0.00	0.00	23.55	18.25	7.69	24.31	13.261	1.849
4/30/2006	5.79	4.33	0.75	25.78	18.43	7.82	25.09	4.250	1.881
5/31/2006	5.94	4.44	0.75	28.01	18.61	7.96	25.96	4.505	1.919
6/30/2006	5.81	4.33	0.75	29.20	18.79	8.09	26.83	4.811	1.957
7/31/2006	5.77	4.29	0.74	29.60	18.96	8.22	27.75	4.923	1.997
8/31/2006	5.73	4.37	0.76	28.24	19.14	8.36	28.62	4.644	2.032
9/30/2006	5.67	4.34	0.77	28.56	19.31	8.49	29.48	4.731	2.067
10/31/2006	5.58	4.42	0.79	20.74	19.49	8.62	30.12	3.404	2.084
11/30/2006	5.51	4.40	0.80	23.44	19.65	8.76	30.83	3.876	2.106
12/31/2006	5.38	4.59	0.85	25.34	19.82	8.90	31.61	4.090	2.132
1/31/2007	5.21	4.85	0.93	21.99	19.98	9.05	32.29	3.435	2.149
2/28/2007	5.08	4.84	0.95	22.65	20.12	9.18	32.93	3.558	2.166
3/31/2007	5.08	4.83	0.95	24.21	20.28	9.33	33.68	3.810	2.187
4/30/2007	4.84	4.97	1.03	24.92	20.42	9.48	34.43	3.880	2.208
5/31/2007	4.56	5.07	1.11	24.93	20.57	9.64	35.20	3.876	2.229
6/30/2007	4.67	5.11	1.10	25.25	20.71	9.79	35.96	3.879	2.249
7/31/2007	4.69	5.02	1.07	23.55	20.85	9.95	36.69	3.665	2.266
8/31/2007	4.68	5.00	1.07	21.03	21.00	10.10	37.34	3.286	2.279
9/30/2007	4.33	4.79	1.11	23.87	21.13	10.25	38.06	3.919	2.297
10/31/2007	3.95	4.74	1.20	24.20	21.25	10.39	38.81	4.084	2.316
11/30/2007	3.90	4.43	1.14	24.25	21.36	10.53	39.53	4.330	2.336
12/31/2007	4.55	5.44	1.19	24.75	21.51	10.70	40.30	3.638	2.353
1/31/2008	4.40	5.30	1.21	24.20	21.64	10.86	41.05	3.659	2.368
2/29/2008	3.20	4.37	1.37	22.64	21.74	10.99	41.71	4.246	2.385
3/31/2008	3.36	4.23	1.26	24.20	21.84	11.12	42.46	4.624	2.405
4/30/2008	3.28	4.16	1.27	15.77	21.94	11.24	42.93	3.070	2.411
5/31/2008	3.31	4.02	1.21	17.83	22.04	11.37	43.48	3.561	2.421
6/30/2008	3.94	4.48	1.14	17.03	22.16	11.50	43.99	3.007	2.426
7/31/2008	4.35	4.89	1.12	22.93	22.29	11.65	44.70	3.700	2.440
8/31/2008	4.38	4.95	1.13	22.16	22.43	11.81	45.39	3.538	2.451
9/30/2008	4.20	4.89	1.16	20.99	22.56	11.95	46.02	3.416	2.461
10/31/2008	4.06	5.02	1.23	19.94	22.68	12.11	46.64	3.199	2.468
11/30/2008	3.98	4.98	1.25	22.18	22.80	12.26	47.30	3.594	2.479
12/31/2008	4.11	5.21	1.27	22.74	22.93	12.42	48.01	3.528	2.490

Date	Oil Rate (CD) m3/d	Water Rate (CD) m3/d	Water Oil Ratio m3/m3	Water Inj Rate (CD) m3/d	Cum Oil Prod Km3	Cum Water Prod Km3	Cum Water Inj Km3	Voidage Replacement Ratio	Cum Voidage Replacement Ratio
1/31/2009	4.04	5.24	1.30	25.46	23.05	12.58	48.80	3.946	2.505
2/28/2009	4.08	5.35	1.31	26.19	23.17	12.73	49.53	3.988	2.519
3/31/2009	3.39	4.22	1.25	25.37	23.27	12.86	50.32	4.847	2.538
4/30/2009	4.19	5.35	1.28	21.60	23.40	13.02	50.97	3.272	2.545
5/31/2009	3.95	4.99	1.26	22.24	23.52	13.18	51.66	3.605	2.555
6/30/2009	3.98	4.98	1.25	19.64	23.64	13.33	52.25	3.184	2.561
7/31/2009	3.90	4.92	1.26	22.49	23.76	13.48	52.94	3.694	2.571
8/31/2009	3.84	4.90	1.28	21.96	23.88	13.63	53.62	3.629	2.581
9/30/2009	3.79	4.97	1.31	24.31	23.99	13.78	54.35	3.983	2.593
10/31/2009	3.67	4.97	1.35	24.47	24.11	13.94	55.11	4.036	2.606
11/30/2009	5.98	10.17	1.70	24.93	24.29	14.24	55.86	2.084	2.597
12/31/2009	8.33	14.26	1.71	29.01	24.55	14.68	56.76	1.731	2.577
1/31/2010	7.87	13.77	1.75	24.88	24.79	15.11	57.53	1.542	2.554
2/28/2010	7.59	12.93	1.70	23.96	25.00	15.47	58.20	1.576	2.536
3/31/2010	7.54	12.37	1.64	24.56	25.24	15.85	58.96	1.679	2.519
4/30/2010	7.57	12.25	1.62	25.54	25.46	16.22	59.73	1.759	2.505
5/31/2010	7.55	12.31	1.63	26.67	25.70	16.60	60.55	1.830	2.493
6/30/2010	7.22	12.24	1.70	26.63	25.91	16.97	61.35	1.850	2.481
7/31/2010	6.81	11.95	1.75	26.87	26.12	17.34	62.19	1.921	2.472
8/31/2010	6.89	12.19	1.77	27.12	26.34	17.72	63.03	1.903	2.462
9/30/2010	6.84	12.07	1.77	25.01	26.54	18.08	63.78	1.771	2.451
10/31/2010	6.78	12.23	1.80	24.25	26.75	18.46	64.53	1.701	2.438
11/30/2010	6.39	12.33	1.93	22.71	26.94	18.83	65.21	1.595	2.425
12/31/2010	6.18	12.25	1.98	22.31	27.14	19.21	65.90	1.583	2.411

Pattern: 02/02-19-16-27 Set: Birdtail Unit #2

Oil Formation Vol. Factor : 1.05 m3/m3

Water Formation Vol Factor : 1.00 m3/m3

Water / Oil Ratio : 1.78 m3/m3

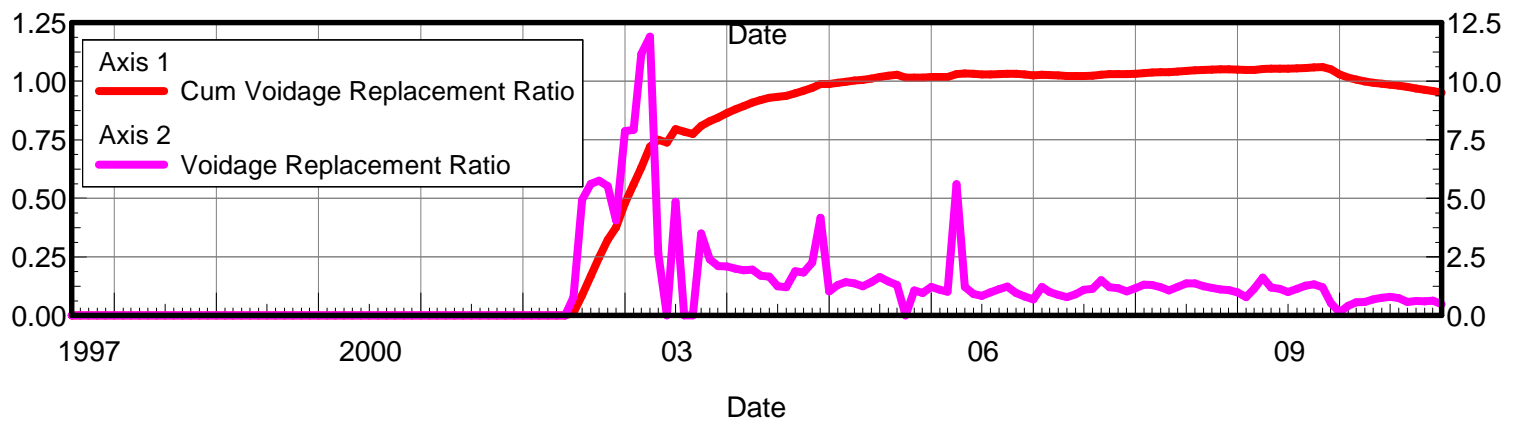
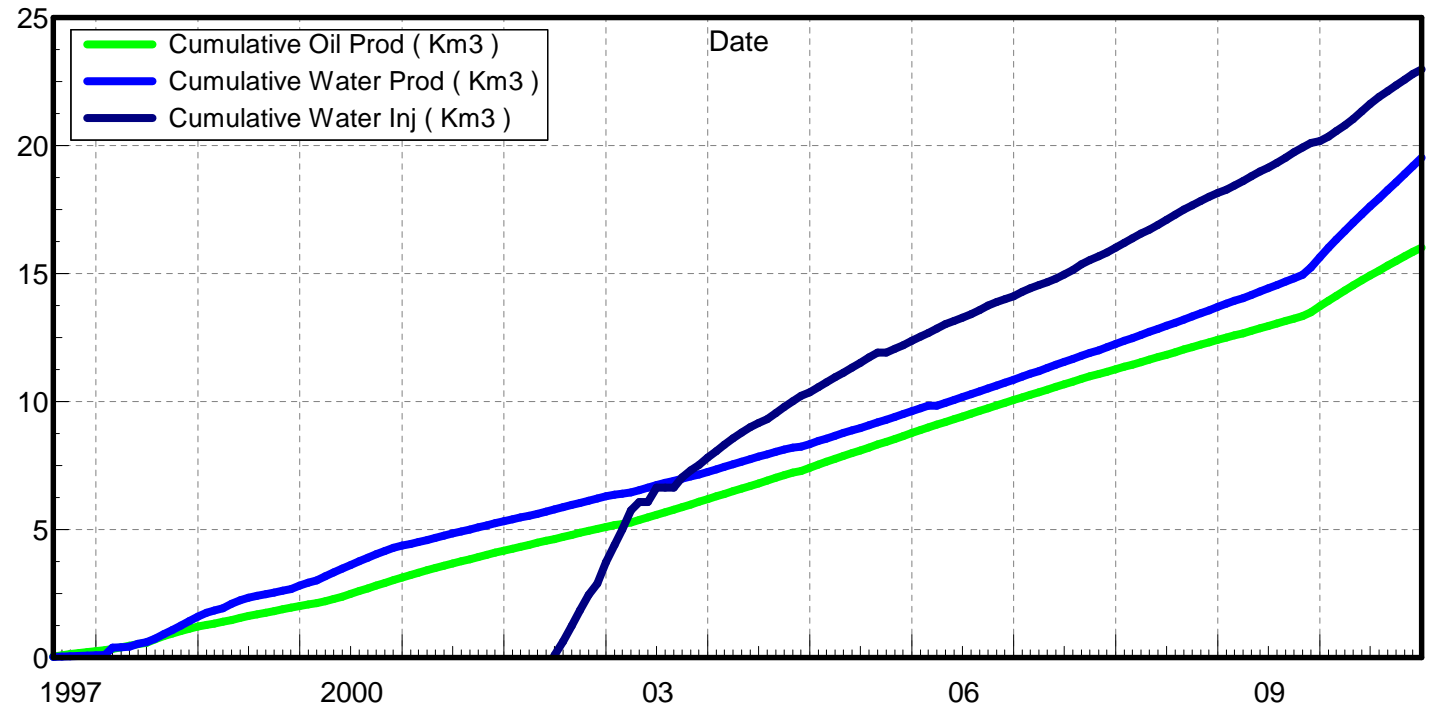
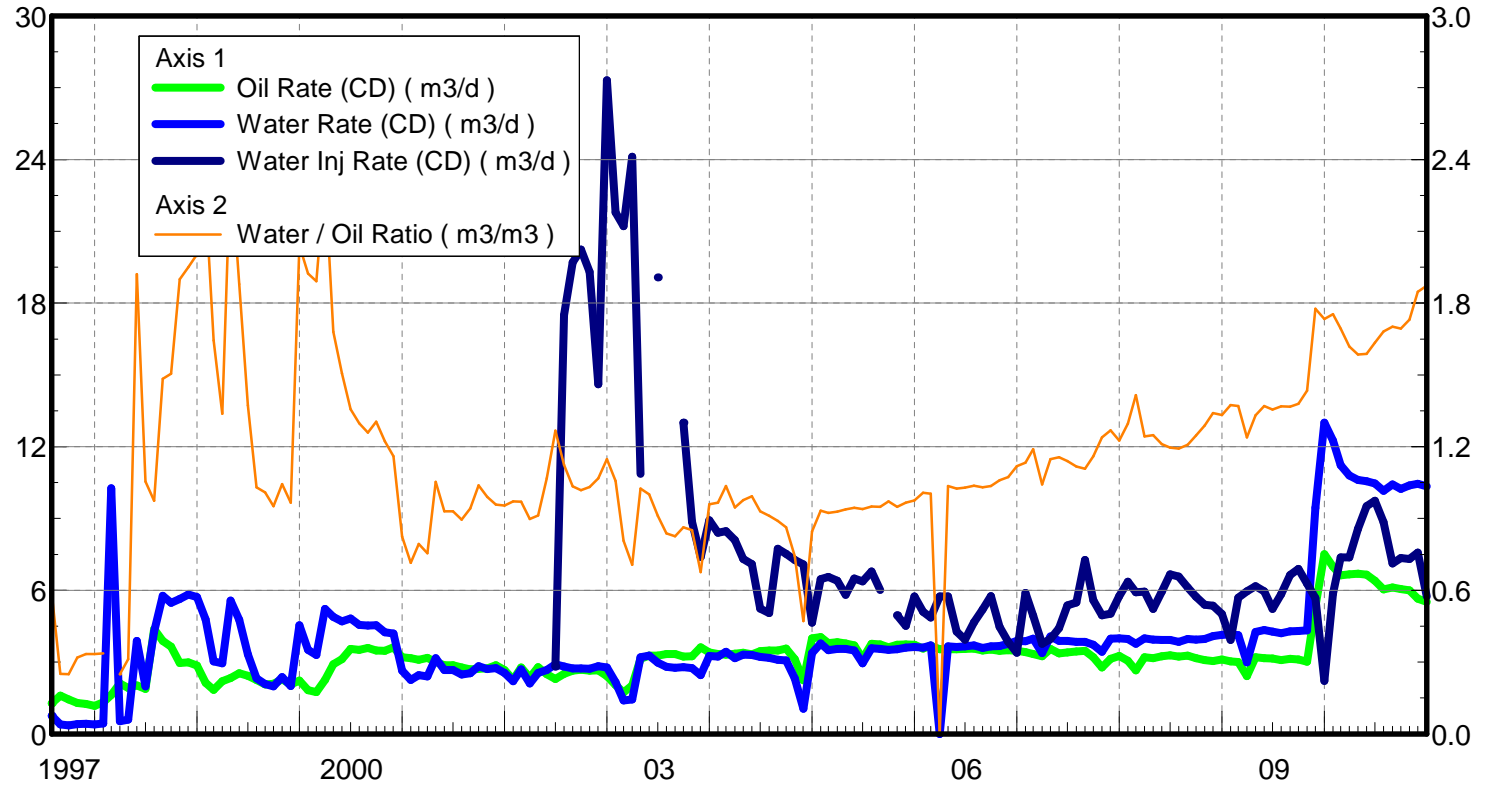
July 26, 2011

Operator: Tundra_Oil_and_Gas_Patnership

Oil Rate (CD) : 5.51 m3/d

Water Rate (CD) : 9.80 m3/d

Water Inj Rate (CD) : 6.99 m3/d



Date	Oil Rate (CD) m3/d	Water Rate (CD) m3/d	Water Oil Ratio m3/m3	Water Inj Rate (CD) m3/d	Cum Oil Prod Km3	Cum Water Prod Km3	Cum Water Inj Km3	Voidage Replacement Ratio	Cum Voidage Replacement Ratio
7/31/1997	1.28	0.75	0.59		0.04	0.02	0.00	0.000	0.000
8/31/1997	1.60	0.40	0.25		0.09	0.04	0.00	0.000	0.000
9/30/1997	1.43	0.36	0.25		0.13	0.05	0.00	0.000	0.000
10/31/1997	1.30	0.41	0.32		0.17	0.06	0.00	0.000	0.000
11/30/1997	1.25	0.42	0.33		0.21	0.07	0.00	0.000	0.000
12/31/1997	1.17	0.39	0.33		0.25	0.08	0.00	0.000	0.000
1/31/1998	1.32	0.44	0.34		0.29	0.10	0.00	0.000	0.000
2/28/1998	1.63	10.27	6.30		0.33	0.39	0.00	0.000	0.000
3/31/1998	2.10	0.52	0.25		0.40	0.40	0.00	0.000	0.000
4/30/1998	1.92	0.60	0.31		0.46	0.42	0.00	0.000	0.000
5/31/1998	2.02	3.89	1.92		0.52	0.54	0.00	0.000	0.000
6/30/1998	1.88	1.98	1.05		0.57	0.60	0.00	0.000	0.000
7/31/1998	4.39	4.27	0.97		0.71	0.73	0.00	0.000	0.000
8/31/1998	3.89	5.77	1.48		0.83	0.91	0.00	0.000	0.000
9/30/1998	3.64	5.48	1.50		0.94	1.07	0.00	0.000	0.000
10/31/1998	2.97	5.64	1.90		1.03	1.25	0.00	0.000	0.000
11/30/1998	2.99	5.83	1.95		1.12	1.42	0.00	0.000	0.000
12/31/1998	2.85	5.71	2.00		1.21	1.60	0.00	0.000	0.000
1/31/1999	2.14	4.79	2.24		1.28	1.75	0.00	0.000	0.000
2/28/1999	1.84	3.02	1.64		1.33	1.83	0.00	0.000	0.000
3/31/1999	2.20	2.95	1.34		1.40	1.93	0.00	0.000	0.000
4/30/1999	2.34	5.57	2.39		1.47	2.09	0.00	0.000	0.000
5/31/1999	2.54	4.77	1.88		1.55	2.24	0.00	0.000	0.000
6/30/1999	2.42	3.33	1.37		1.62	2.34	0.00	0.000	0.000
7/31/1999	2.26	2.33	1.03		1.69	2.41	0.00	0.000	0.000
8/31/1999	2.06	2.08	1.01		1.75	2.48	0.00	0.000	0.000
9/30/1999	2.10	1.99	0.95		1.81	2.54	0.00	0.000	0.000
10/31/1999	2.28	2.38	1.04		1.89	2.61	0.00	0.000	0.000
11/30/1999	2.07	2.00	0.97		1.95	2.67	0.00	0.000	0.000
12/31/1999	2.23	4.54	2.04		2.02	2.81	0.00	0.000	0.000
1/31/2000	1.82	3.50	1.92		2.07	2.92	0.00	0.000	0.000
2/29/2000	1.74	3.29	1.89		2.12	3.02	0.00	0.000	0.000
3/31/2000	2.25	5.23	2.32		2.19	3.18	0.00	0.000	0.000
4/30/2000	2.91	4.89	1.68		2.28	3.33	0.00	0.000	0.000
5/31/2000	3.12	4.70	1.51		2.38	3.47	0.00	0.000	0.000
6/30/2000	3.55	4.82	1.36		2.48	3.62	0.00	0.000	0.000
7/31/2000	3.51	4.55	1.30		2.59	3.76	0.00	0.000	0.000
8/31/2000	3.59	4.52	1.26		2.70	3.90	0.00	0.000	0.000
9/30/2000	3.48	4.54	1.30		2.81	4.03	0.00	0.000	0.000
10/31/2000	3.47	4.25	1.22		2.92	4.16	0.00	0.000	0.000
11/30/2000	3.62	4.19	1.16		3.02	4.29	0.00	0.000	0.000
12/31/2000	3.20	2.64	0.82		3.12	4.37	0.00	0.000	0.000
1/31/2001	3.16	2.26	0.71		3.22	4.44	0.00	0.000	0.000
2/28/2001	3.10	2.46	0.79		3.31	4.51	0.00	0.000	0.000
3/31/2001	3.18	2.40	0.75		3.41	4.59	0.00	0.000	0.000
4/30/2001	3.01	3.17	1.05		3.50	4.68	0.00	0.000	0.000
5/31/2001	2.87	2.67	0.93		3.59	4.76	0.00	0.000	0.000
6/30/2001	2.87	2.67	0.93		3.67	4.84	0.00	0.000	0.000

Date	Oil Rate (CD) m3/d	Water Rate (CD) m3/d	Water Oil Ratio m3/m3	Water Inj Rate (CD) m3/d	Cum Oil Prod Km3	Cum Water Prod Km3	Cum Water Inj Km3	Voidage Replacement Ratio	Cum Voidage Replacement Ratio
7/31/2001	2.78	2.49	0.89		3.76	4.92	0.00	0.000	0.000
8/31/2001	2.69	2.53	0.94		3.84	5.00	0.00	0.000	0.000
9/30/2001	2.73	2.83	1.04		3.92	5.08	0.00	0.000	0.000
10/31/2001	2.74	2.71	0.99		4.01	5.17	0.00	0.000	0.000
11/30/2001	2.87	2.75	0.96		4.09	5.25	0.00	0.000	0.000
12/31/2001	2.67	2.55	0.95		4.18	5.33	0.00	0.000	0.000
1/31/2002	2.27	2.21	0.97		4.25	5.40	0.00	0.000	0.000
2/28/2002	2.78	2.70	0.97		4.33	5.47	0.00	0.000	0.000
3/31/2002	2.34	2.10	0.90		4.40	5.54	0.00	0.000	0.000
4/30/2002	2.79	2.54	0.91		4.48	5.61	0.00	0.000	0.000
5/31/2002	2.50	2.67	1.07		4.56	5.70	0.00	0.000	0.000
6/30/2002	2.29	2.91	1.27	2.82	4.63	5.78	0.08	0.783	0.012
7/31/2002	2.51	2.82	1.12	17.50	4.71	5.87	0.63	4.899	0.086
8/31/2002	2.65	2.74	1.03	19.70	4.79	5.96	1.24	5.580	0.167
9/30/2002	2.69	2.74	1.02	20.24	4.87	6.04	1.85	5.717	0.246
10/31/2002	2.65	2.73	1.03	19.30	4.95	6.12	2.44	5.484	0.321
11/30/2002	2.65	2.83	1.07	14.60	5.03	6.21	2.88	4.028	0.374
12/31/2002	2.41	2.77	1.15	27.32	5.11	6.29	3.73	7.820	0.477
1/31/2003	2.04	2.16	1.06	21.79	5.17	6.36	4.40	7.866	0.557
2/28/2003	1.73	1.40	0.81	21.21	5.22	6.40	5.00	11.066	0.628
3/31/2003	2.03	1.44	0.71	24.12	5.28	6.45	5.75	11.792	0.716
4/30/2003	3.13	3.21	1.02	10.86	5.37	6.54	6.07	2.619	0.745
5/31/2003	3.27	3.27	1.00		5.48	6.64	6.07	0.000	0.733
6/30/2003	3.27	2.98	0.91	19.07	5.57	6.73	6.64	4.820	0.791
7/31/2003	3.34	2.80	0.84		5.68	6.82	6.64	0.000	0.780
8/31/2003	3.34	2.76	0.83		5.78	6.90	6.64	0.000	0.769
9/30/2003	3.23	2.79	0.86	13.01	5.88	6.99	7.03	3.466	0.804
10/31/2003	3.24	2.75	0.85	8.86	5.98	7.07	7.31	2.380	0.825
11/30/2003	3.62	2.45	0.68	7.39	6.09	7.15	7.53	2.092	0.840
12/31/2003	3.40	3.26	0.96	8.92	6.19	7.25	7.81	2.084	0.858
1/31/2004	3.34	3.23	0.97	8.41	6.30	7.35	8.07	1.990	0.874
2/29/2004	3.32	3.43	1.04	8.48	6.39	7.45	8.31	1.916	0.888
3/31/2004	3.35	3.17	0.95	8.09	6.50	7.55	8.56	1.942	0.902
4/30/2004	3.40	3.31	0.98	7.31	6.60	7.65	8.78	1.688	0.913
5/31/2004	3.33	3.30	0.99	7.09	6.70	7.75	9.00	1.650	0.923
6/30/2004	3.46	3.21	0.93	5.24	6.80	7.84	9.16	1.232	0.927
7/31/2004	3.49	3.18	0.91	5.05	6.91	7.94	9.32	1.194	0.931
8/31/2004	3.48	3.10	0.89	7.73	7.02	8.04	9.56	1.867	0.942
9/30/2004	3.56	3.07	0.86	7.53	7.13	8.13	9.78	1.819	0.953
10/31/2004	3.12	2.32	0.74	7.27	7.22	8.20	10.01	2.236	0.966
11/30/2004	2.23	1.05	0.47	7.08	7.29	8.23	10.22	4.113	0.981
12/31/2004	3.99	3.38	0.85	4.65	7.41	8.34	10.36	1.016	0.982
1/31/2005	4.05	3.78	0.93	6.46	7.54	8.46	10.56	1.295	0.986
2/28/2005	3.79	3.50	0.92	6.56	7.65	8.55	10.75	1.416	0.991
3/31/2005	3.83	3.56	0.93	6.40	7.77	8.66	10.95	1.361	0.996
4/30/2005	3.78	3.55	0.94	5.81	7.88	8.77	11.12	1.243	0.999
5/31/2005	3.69	3.49	0.94	6.50	7.99	8.88	11.32	1.415	1.005
6/30/2005	3.15	2.95	0.94	6.37	8.09	8.97	11.51	1.636	1.011

Date	Oil Rate (CD) m3/d	Water Rate (CD) m3/d	Water Oil Ratio m3/m3	Water Inj Rate (CD) m3/d	Cum Oil Prod Km3	Cum Water Prod Km3	Cum Water Inj Km3	Voidage Replacement Ratio	Cum Voidage Replacement Ratio
7/31/2005	3.76	3.57	0.95	6.78	8.20	9.08	11.72	1.443	1.017
8/31/2005	3.74	3.55	0.95	6.01	8.32	9.19	11.91	1.289	1.020
9/30/2005	3.61	3.51	0.97		8.43	9.29	11.91	0.000	1.008
10/31/2005	3.73	3.53	0.95	4.96	8.54	9.40	12.06	1.067	1.009
11/30/2005	3.73	3.60	0.97	4.52	8.66	9.51	12.20	0.958	1.008
12/31/2005	3.73	3.64	0.98	5.75	8.77	9.62	12.38	1.209	1.011
1/31/2006	3.57	3.60	1.01	5.10	8.88	9.74	12.54	1.093	1.012
2/28/2006	3.68	3.70	1.00	4.86	8.99	9.84	12.67	1.013	1.012
3/31/2006	3.54	0.00	0.00	5.75	9.09	9.84	12.85	5.421	1.023
4/30/2006	3.54	3.66	1.04	5.74	9.20	9.95	13.02	1.216	1.025
5/31/2006	3.54	3.63	1.03	4.27	9.31	10.06	13.15	0.911	1.024
6/30/2006	3.56	3.66	1.03	3.94	9.42	10.17	13.27	0.834	1.022
7/31/2006	3.56	3.69	1.04	4.65	9.53	10.29	13.42	0.978	1.021
8/31/2006	3.49	3.60	1.03	5.20	9.64	10.40	13.58	1.120	1.022
9/30/2006	3.53	3.65	1.04	5.75	9.74	10.51	13.75	1.221	1.025
10/31/2006	3.46	3.67	1.06	4.47	9.85	10.62	13.89	0.949	1.024
11/30/2006	3.50	3.76	1.07	3.85	9.95	10.73	14.01	0.800	1.021
12/31/2006	3.47	3.88	1.12	3.39	10.06	10.85	14.11	0.689	1.018
1/31/2007	3.41	3.87	1.13	5.89	10.17	10.97	14.29	1.205	1.020
2/28/2007	3.34	3.98	1.19	4.94	10.26	11.09	14.43	0.992	1.019
3/31/2007	3.24	3.38	1.04	3.77	10.36	11.19	14.55	0.866	1.018
4/30/2007	3.55	4.07	1.15	3.96	10.47	11.31	14.67	0.772	1.015
5/31/2007	3.36	3.89	1.16	4.43	10.57	11.43	14.80	0.904	1.014
6/30/2007	3.40	3.88	1.14	5.36	10.67	11.55	14.96	1.094	1.015
7/31/2007	3.45	3.85	1.12	5.49	10.78	11.67	15.14	1.124	1.016
8/31/2007	3.47	3.84	1.11	7.27	10.89	11.79	15.36	1.491	1.021
9/30/2007	3.21	3.72	1.16	5.58	10.99	11.90	15.53	1.193	1.022
10/31/2007	2.77	3.43	1.24	4.95	11.07	12.01	15.68	1.162	1.024
11/30/2007	3.13	3.98	1.27	5.02	11.17	12.13	15.83	1.022	1.024
12/31/2007	3.25	3.99	1.23	5.75	11.27	12.25	16.01	1.160	1.025
1/31/2008	3.06	3.96	1.30	6.36	11.36	12.37	16.21	1.304	1.028
2/29/2008	2.66	3.77	1.42	5.92	11.44	12.48	16.38	1.297	1.030
3/31/2008	3.21	3.99	1.24	5.94	11.54	12.60	16.56	1.200	1.032
4/30/2008	3.16	3.94	1.25	5.22	11.63	12.72	16.72	1.070	1.032
5/31/2008	3.25	3.93	1.21	5.94	11.73	12.84	16.90	1.213	1.034
6/30/2008	3.28	3.92	1.20	6.67	11.83	12.96	17.10	1.360	1.036
7/31/2008	3.23	3.85	1.19	6.57	11.93	13.08	17.31	1.364	1.039
8/31/2008	3.28	3.96	1.21	6.12	12.03	13.20	17.50	1.238	1.041
9/30/2008	3.16	3.94	1.25	5.73	12.13	13.32	17.67	1.171	1.042
10/31/2008	3.08	3.97	1.29	5.40	12.22	13.45	17.84	1.104	1.043
11/30/2008	3.05	4.09	1.34	5.35	12.31	13.57	18.00	1.071	1.043
12/31/2008	3.11	4.14	1.33	5.01	12.41	13.70	18.15	0.987	1.043
1/31/2009	3.03	4.16	1.37	3.93	12.50	13.83	18.27	0.776	1.040
2/28/2009	3.01	4.12	1.37	5.69	12.59	13.94	18.43	1.132	1.041
3/31/2009	2.42	2.99	1.24	5.95	12.66	14.03	18.62	1.603	1.045
4/30/2009	3.20	4.26	1.33	6.17	12.76	14.16	18.80	1.183	1.046
5/31/2009	3.17	4.34	1.37	5.96	12.86	14.30	18.99	1.126	1.047
6/30/2009	3.15	4.28	1.36	5.23	12.95	14.42	19.14	1.001	1.046

Date	Oil Rate (CD) m3/d	Water Rate (CD) m3/d	Water Oil Ratio m3/m3	Water Inj Rate (CD) m3/d	Cum Oil Prod Km3	Cum Water Prod Km3	Cum Water Inj Km3	Voidage Replacement Ratio	Cum Voidage Replacement Ratio
7/31/2009	3.08	4.21	1.37	5.84	13.05	14.56	19.33	1.138	1.047
8/31/2009	3.14	4.29	1.37	6.65	13.15	14.69	19.53	1.271	1.049
9/30/2009	3.12	4.29	1.38	6.90	13.24	14.82	19.74	1.319	1.051
10/31/2009	3.02	4.33	1.43	6.27	13.33	14.95	19.93	1.200	1.052
11/30/2009	5.32	9.44	1.78	5.68	13.49	15.23	20.10	0.515	1.043
12/31/2009	7.50	13.00	1.73	2.21	13.72	15.64	20.17	0.145	1.022
1/31/2010	6.99	12.26	1.75	5.86	13.94	16.02	20.35	0.409	1.008
2/28/2010	6.63	11.23	1.69	7.38	14.13	16.33	20.56	0.558	1.000
3/31/2010	6.67	10.80	1.62	7.37	14.33	16.67	20.79	0.577	0.992
4/30/2010	6.69	10.61	1.58	8.57	14.53	16.98	21.05	0.680	0.987
5/31/2010	6.65	10.56	1.59	9.51	14.74	17.31	21.34	0.758	0.982
6/30/2010	6.40	10.46	1.63	9.74	14.93	17.63	21.63	0.787	0.979
7/31/2010	6.04	10.15	1.68	8.85	15.12	17.94	21.91	0.740	0.975
8/31/2010	6.12	10.42	1.70	7.12	15.31	18.26	22.13	0.581	0.969
9/30/2010	6.05	10.24	1.69	7.35	15.49	18.57	22.35	0.610	0.963
10/31/2010	6.00	10.38	1.73	7.31	15.68	18.89	22.58	0.600	0.957
11/30/2010	5.65	10.45	1.85	7.58	15.85	19.21	22.80	0.624	0.952
12/31/2010	5.52	10.34	1.87	5.74	16.02	19.53	22.98	0.479	0.945